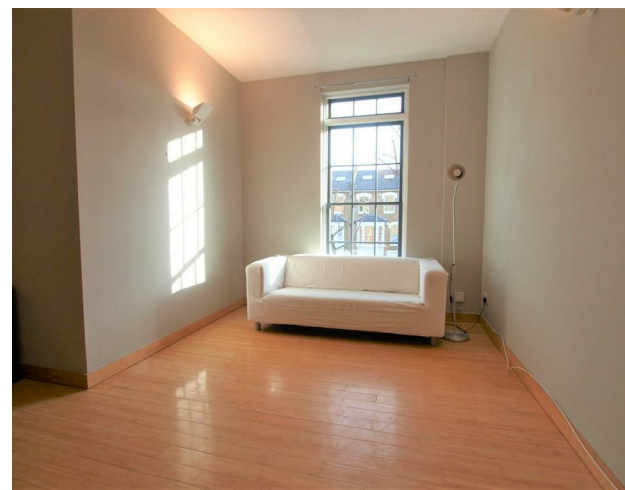


Flat 4, 23 Hanley Road, Finsbury Park, London, N4 3DU  
£3,100 Per month

am  
alexmarks.co.uk



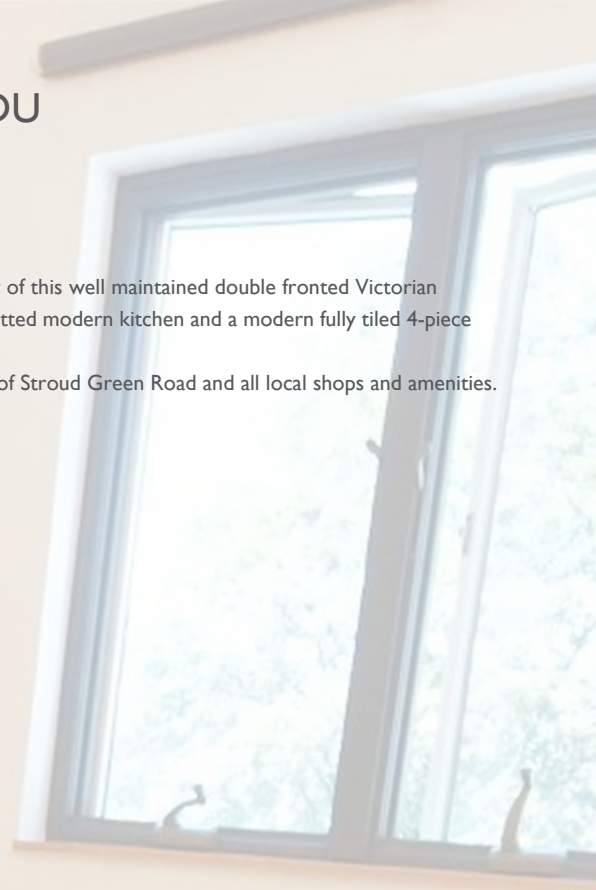
Flat 4, 23 Hanley Road, Finsbury Park, London, N4 3DU

£3,100 Per month

Council Tax Band: D

This is an extremely bright and well decorated 3 double bedroom apartment situated on the 1st floor of this well maintained double fronted Victorian conversion. It boasts strip wooden floors throughout, high ceilings, large double glazed windows, fully fitted modern kitchen and a modern fully tiled 4-piece bathroom suite including stand-alone shower. 3 good sized double bedrooms.

It is ideally located in between Archway and Finsbury Park tube stations and is within close proximity of Stroud Green Road and all local shops and amenities.  
Available furnished





448 Hornsey Road

London

N19 4EE

02070787950

alex@alexmarks.co.uk

www.alexmarks.co.uk

